

A YEAR AFTER eGFR – A SINGLE CENTRE REVIEW

Menon, M¹, Bavakunji, R², Taylor, J¹

¹Dorset County Hospital, Dorchester; ²Southmead Hospital, Bristol

INTRODUCTION: The Chronic Kidney Disease (CKD) guidelines and laboratory estimated glomerular filtration rate (eGFR) reporting were introduced in the UK in April 2006 to facilitate early identification and management of Chronic Kidney Disease.¹

AIMS: The aim of this study was to determine the impact of the introduction of laboratory eGFR reporting on new patient referrals to the new patient clinics in our unit.

Methods: The number of new adult patients, their age, sex, number in each CKD stage and the sources of the referrals over the period of a year following the introduction of laboratory eGFR reporting in April 2006 were analyzed and compared with referrals in the year preceding it (April 2005-06).

RESULT: The total number of new patient referrals in the period between April 2006-07 were 745 (males= 412 (55%) females=333 (45%)) compared to 547 (males= 339 (62%); females=208 (38%)) in the period between April 2005-06. There was hence a 36% rise in the total number of referrals. We also found a rise in the average age of referral and on closer scrutiny, a 92 % increase in referrals of patients over the age of 80. There was a 75% increase in referrals in CKD stages 4 and 5. The percentage of patients referred in the various stages of CKD is represented in Fig 1.

There was found to be a 47 % increase in GP referrals compared to 40 % in referrals from other medical specialties. And interestingly we found an 18 % decrease in the number of surgical referrals.

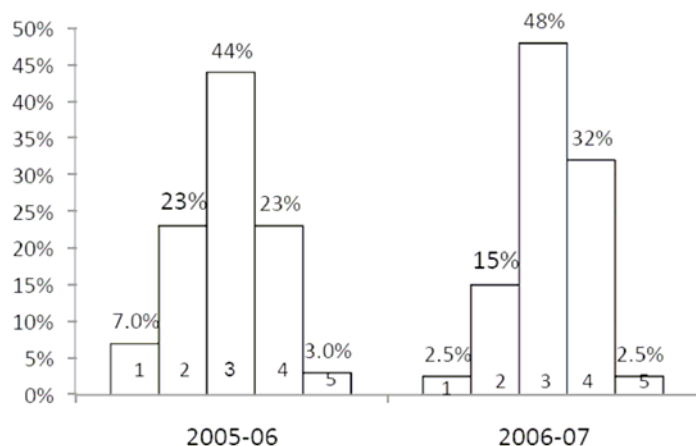


Fig.1 Referrals by CKD stages
(CKD stage as labeled inside each bar)

CKD Stages	Number of referrals	
	2005-06	2006-07
1	0	0
2	2	3
3	40	64
4	48	115
5	10	10

Fig 2. Referrals by CKD Stages in patients ≥ 80 years

CONCLUSION: We conclude that there has been a significant rise in new patient referrals with an abrupt increase in the average age of referral (Fig2) as also seen in a previous study.¹ We are presently collecting data for a further year to assess the trend and are also analyzing the data already collected to assess the advantage of early referral to the renal team.

REFERENCE:

1. Renal Association. The short CKD eGuide, derived from the UK CKD Guidelines.
2. The Early Impact of the United Kingdom Chronic Kidney Disease (CKD) Guidelines on the Number of New Attendances at Renal Clinics *H Aghaie-Jaladerany, D Cowell, C C Geddes* Scottish Medical Journal Volume 52 Issue 4 November 2007